
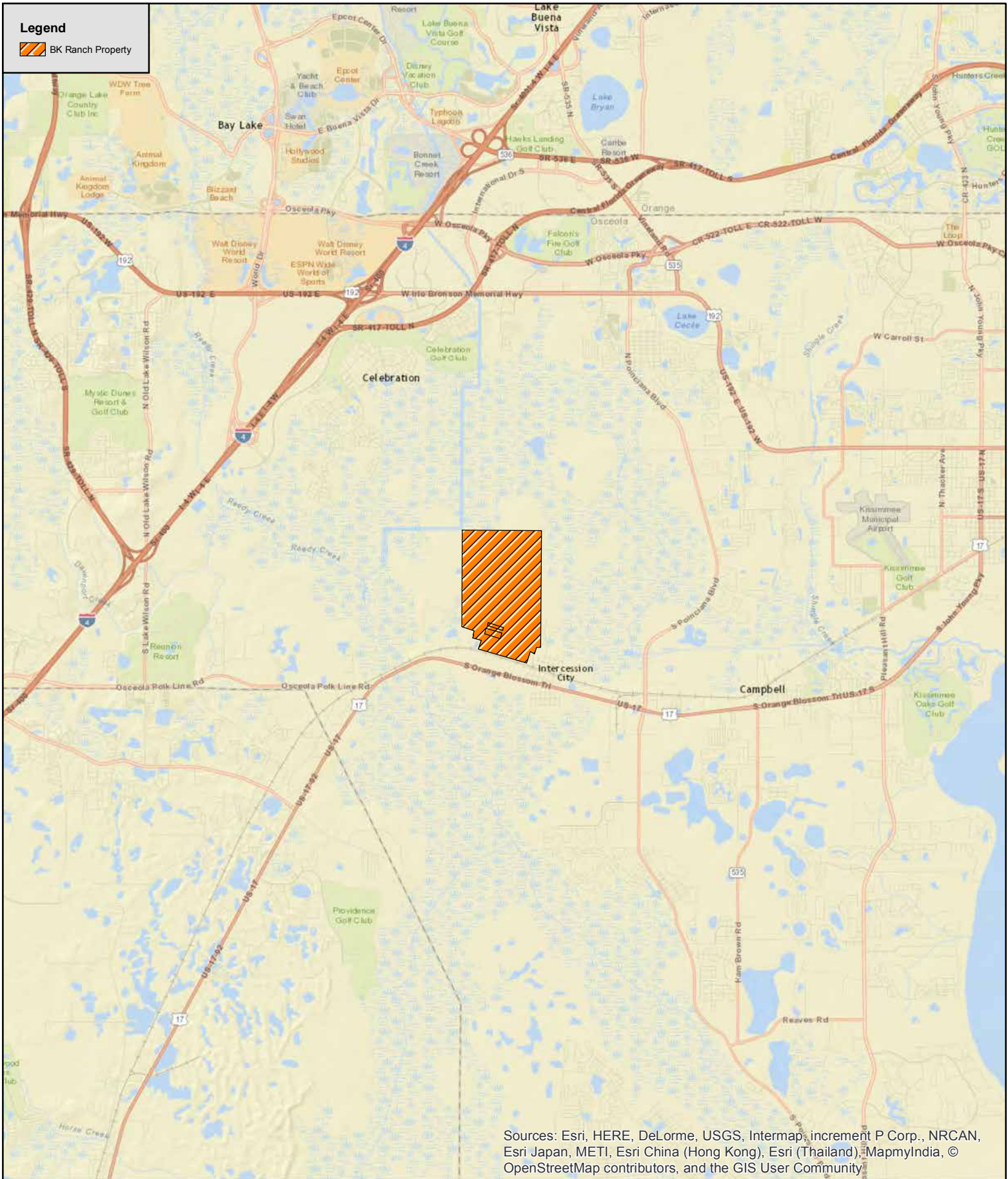


**Legend**

 BK Ranch Property



Sources: Esri, HERE, DeLorme, USGS, Intermap, increment P Corp., NRCAN, Esri Japan, METI, Esri China (Hong Kong), Esri (Thailand), MapmyIndia, © OpenStreetMap contributors, and the GIS User Community

**BK Ranch**  
Osceola County, Florida  
Figure 1  
Location Map



0 0.75 1.5  
Miles

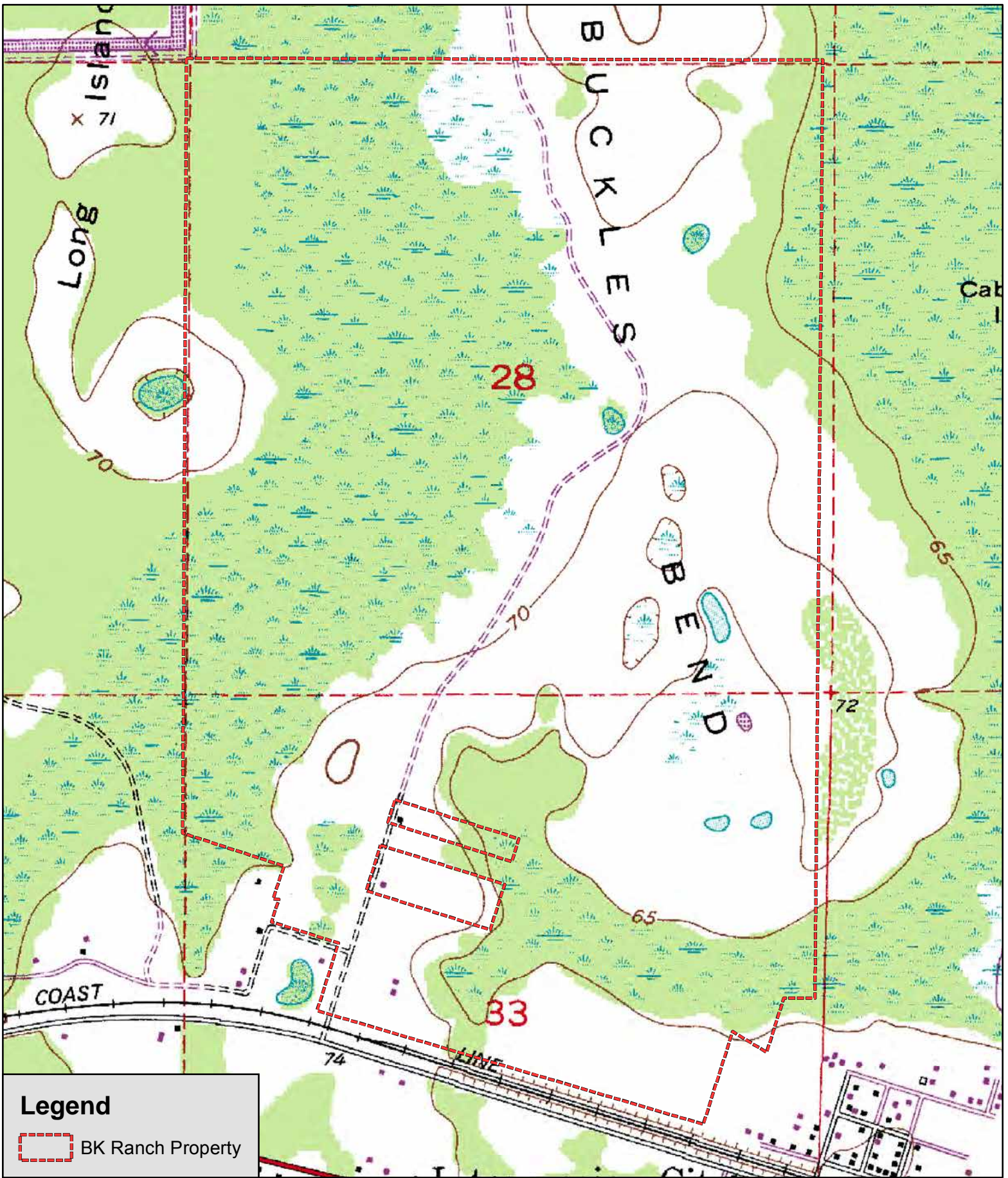
Project #:654-  
Produced By: JDH  
Date: 3/14/2016



### Legend

 BK Ranch Property





BK Ranch  
 Osceola County, Florida  
 Figure 3  
 USGS Topographic Map

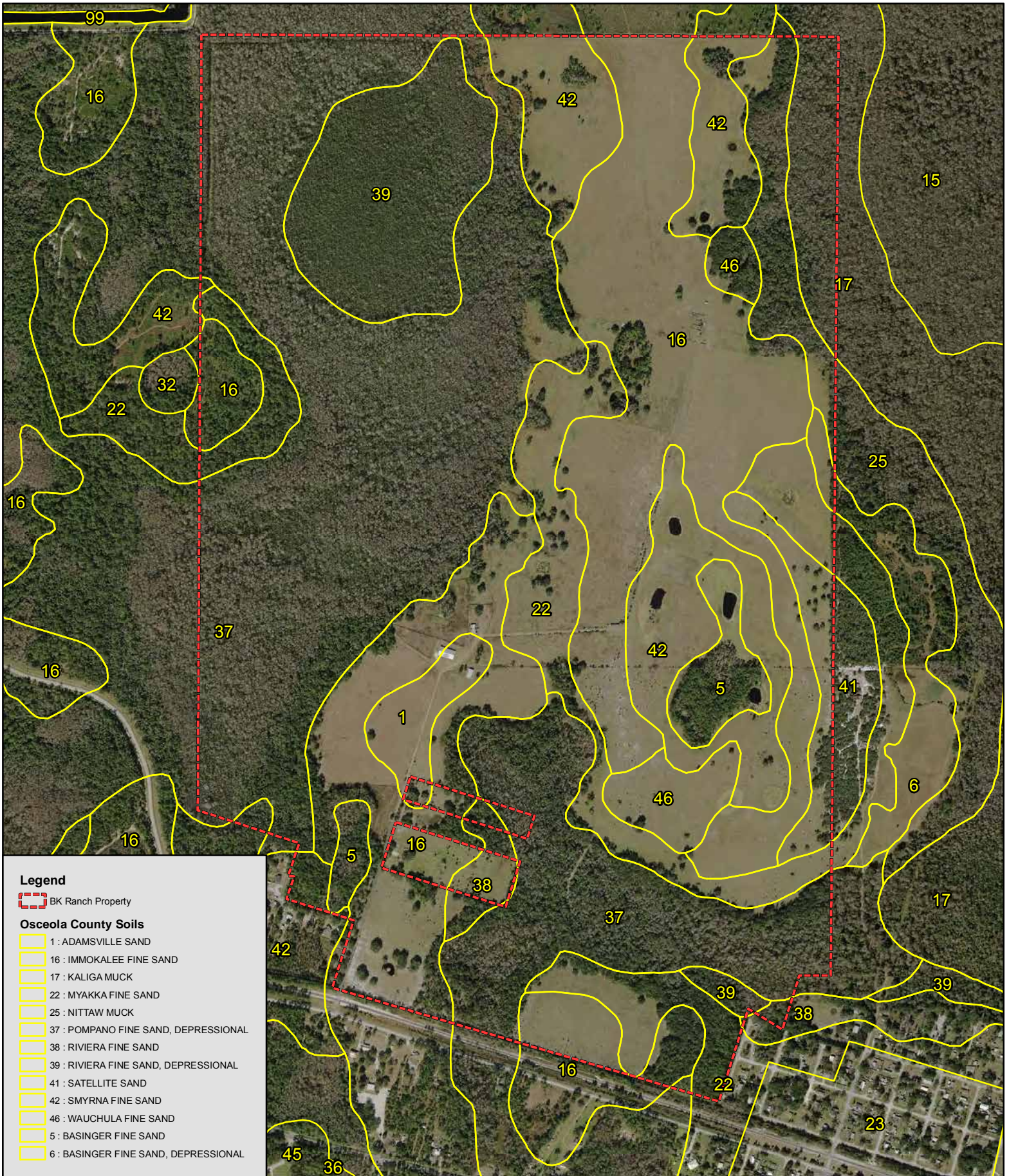


0 500 1,000  
 Feet

Project #:654-  
 Produced By: JDH  
 Date: 3/14/2016

**Legend**

 BK Ranch Property

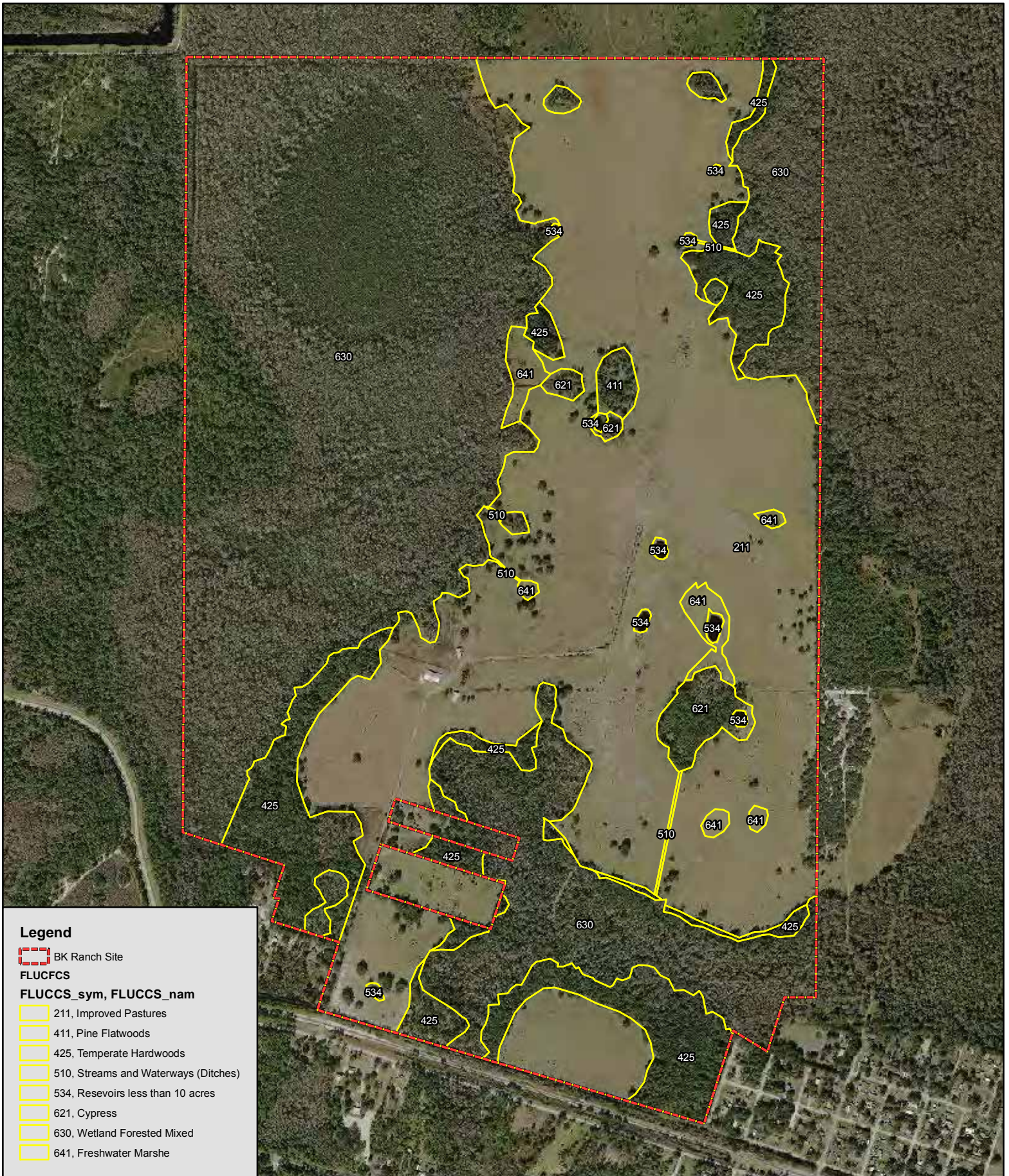


BK Ranch  
 Osceola County, Florida  
 Figure 4  
 USDA - NRCS Soil Map



0 500 1,000  
 Feet

Project #:654-  
 Produced By: JDH  
 Date: 3/14/2016



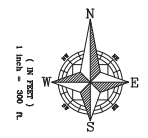
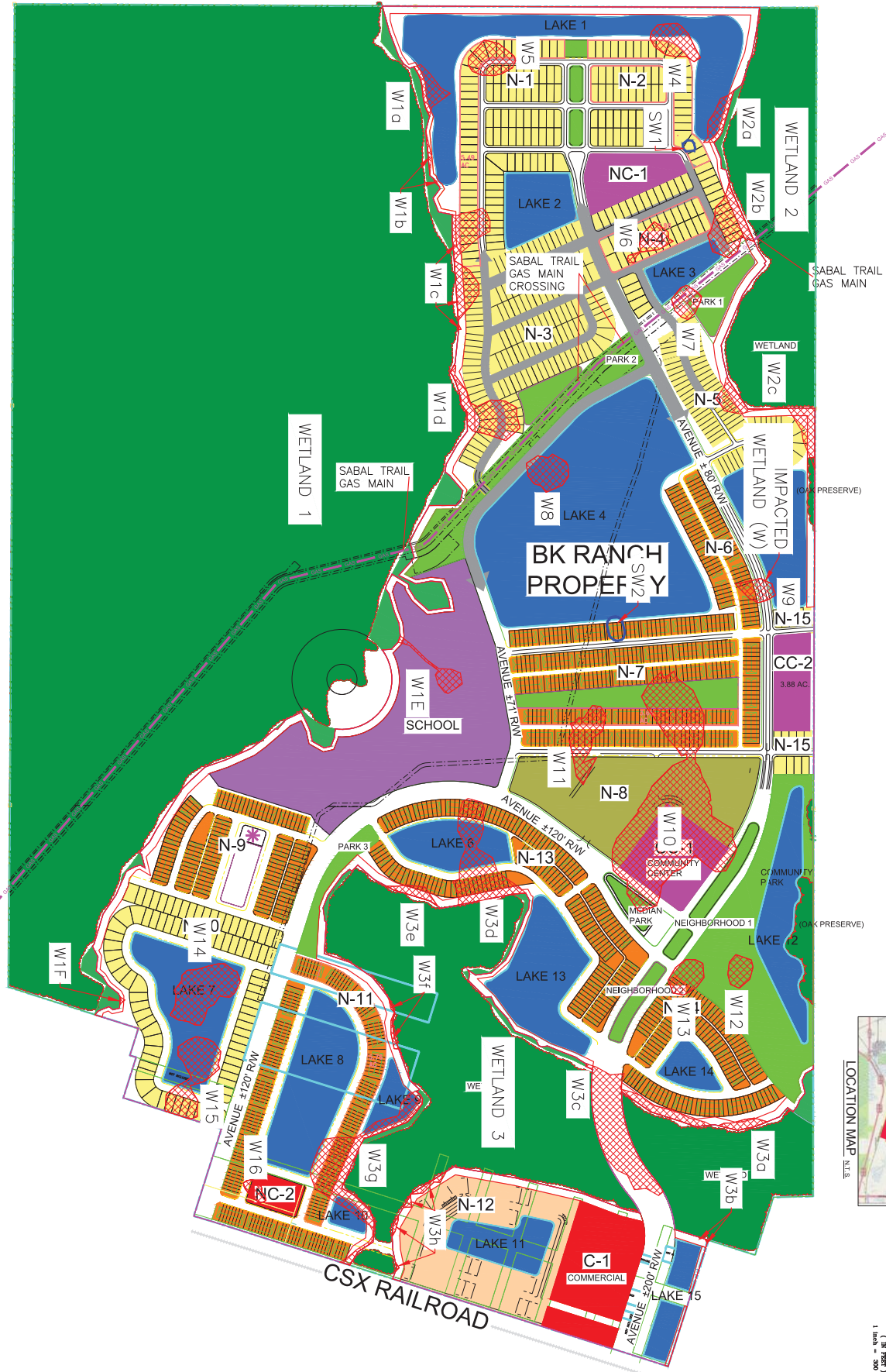
BK Ranch  
 Osceola County, Florida  
 Figure 5  
 FLUCFCS Map

1,200

Feet

Project #:654-11  
 Produced By: STC  
 Date: 5/6/2016

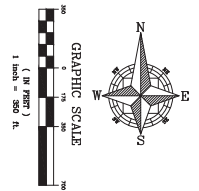
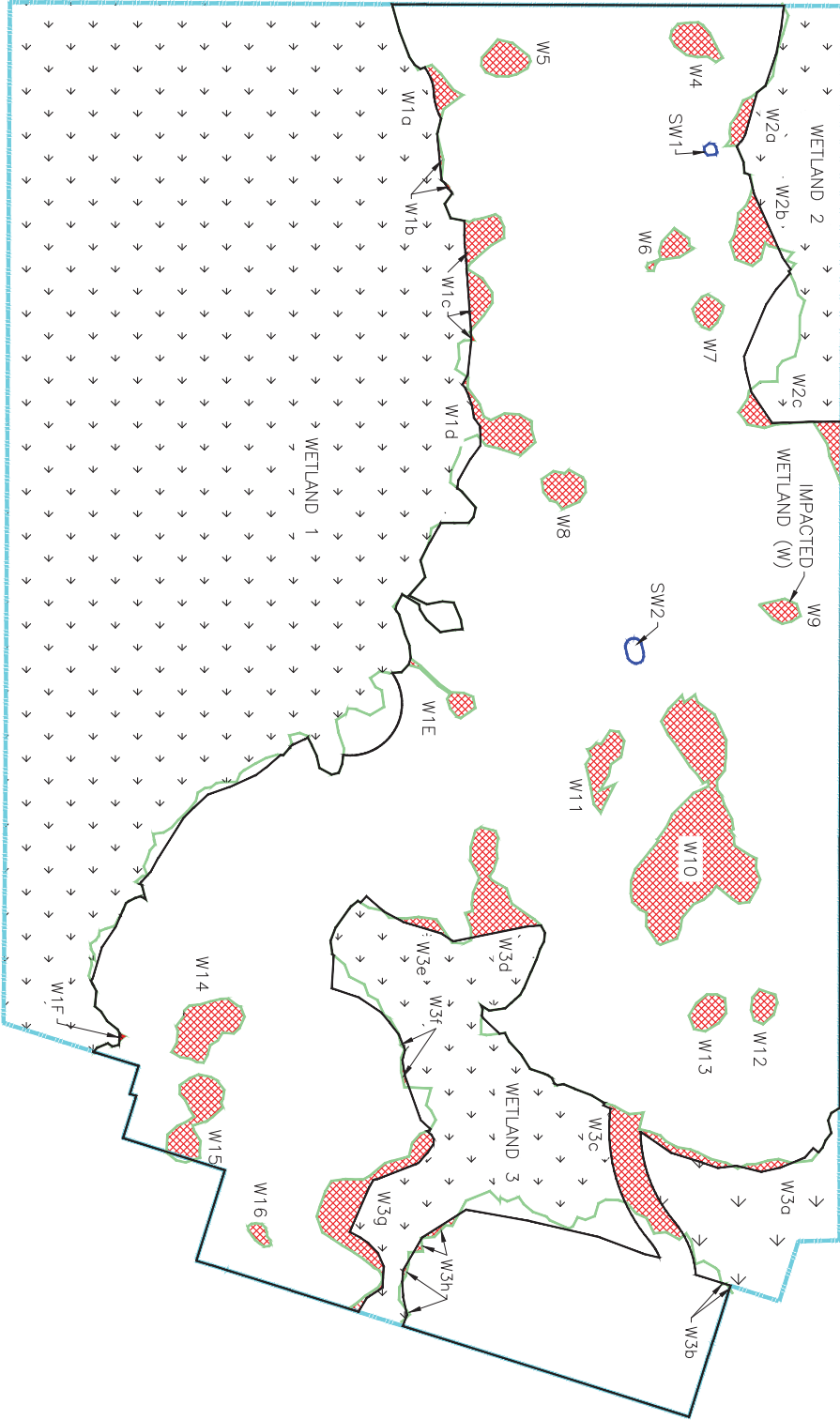




CPA16-0002

<p><b>NOT FOR CONSTRUCTION</b></p>		<p>MASTER SITE PLAN</p>		<p><b>IBI GROUP (FLORIDA) INC.</b>  <small>HTTP://WWW.IBIGROUP.COM</small></p>		<p>PLANNERS                  ENVIRONMENTAL CONSULTANTS</p>					
<p>DESIGNED                  RW                  3/31/16</p>	<p>SCALE                  1" = 500'</p>	<p>PROJECT                  RW                  3/31/16</p>	<p>DATE                  1/3/2017</p>	<p>DATE                  1/3/2017</p>	<p>DATE                  1/3/2017</p>	<p>DATE                  1/3/2017</p>	<p>DATE                  1/3/2017</p>				
<p>BK RANCH</p>				<p>2300 MAITLAND CENTER PARKWAY, SUITE 100, MAITLAND, FLORIDA, 32751 (407) 860-2120</p>				<p>2200 PARK CENTRAL BLVD. N., SUITE 100, POMPANO BEACH, FLORIDA, 33064 (954) 974-2200</p>			
<p>ENGINEER'S CERT. OF AUTH. #0696 LANDSCAPE LC #0600270 SURVEYOR'S AC #408910</p>				<p>REV DATE DESCRIPTION BY</p>				<p>REV DATE DESCRIPTION BY</p>			

Wetland/Surface Water	Area
W1	5.32
W1A	0.69
W1B	0.09
W1C	2.08
W1D	1.85
W1E	0.60
W1F	4.02
W2	3.75
W2A	0.64
W2B	1.74
W2C	1.38
W3	12.31
W3A	0.30
W3B	0.01
W3C	4.27
W3D	3.27
W3E	0.36
W3F	0.11
W3G	3.74
W3H	0.26
W4	1.19
W5	1.19
W6	0.68
W7	0.67
W8	1.12
W8	0.60
W10	13.43
W11	1.49
W12	0.61
W13	0.91
W14	2.59
W15	2.31
W16	0.30
SW1	0.11
SW2	0.33
<b>Total Wetland Impacts</b>	
<b>48.49</b>	
<b>Total Surface Water</b>	
<b>0.44</b>	
<b>Total Impacts</b>	
<b>48.97</b>	



<p><b>NOT FOR CONSTRUCTION</b></p> <p>IBI GROUP FLORIDA INC. REGISTERED PROFESSIONAL ENGINEERS NO. 2748</p>	SCALE: 1" = 350'	DRAWN: X.XXXXXXX	<p><b>WETLAND IMPACT MAP</b></p> <p><b>BK RANCH</b></p>	<p><b>IBI GROUP (FLORIDA) INC.</b>  <a href="http://www.ibigroup.com">HTTP://WWW.IBIGROUP.COM</a>                  SURVEYORS PLANNERS                  LANDSCAPE ARCHITECTS ENVIRONMENTAL CONSULTANTS</p> <p>2300 WATLAND CENTER PARKWAY SUITE 101 WATLAND, FLORIDA 32751 (407) 860-2120</p> <p>2200 PARK CENTRAL BLVD. N. SUITE 101 POMPANO BEACH, FLORIDA 33064 (954) 974-2200</p> <p>ORLANDO POMPANO BEACH</p>
	PROJECT: 38318	DESIGNED: X.XXXXXXX		
	SHEET: CX.X	CHECKED: X.XXXXXXX		
	DATE: 11/17/2016			
<p>REV. DATE DESCRIPTION BY</p>				